



PRINCE EDWARD COUNTY, ONTARIO

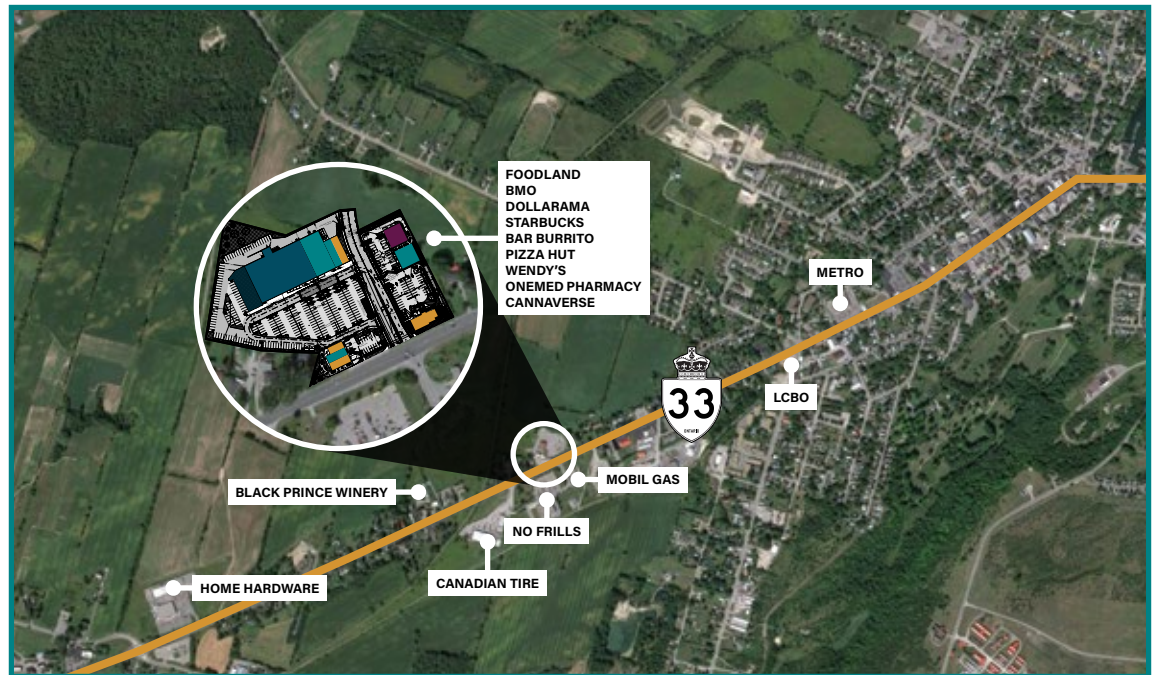
BUILD TO SUIT OPPORTUNITY FOR LEASE

Alex Shafran, Broker of Record | 905-667-4892 | ashafran@deerfielddevelopments.com



Location

- Excellent development opportunity
- Located at Loyalist Commons (23 George Wright Blvd., Picton)
- Located on high traffic corridor King's Highway 33, commonly referred to as Highway 33 or Loyalist Parkway
- Pad Site opportunities
- Financial institution opportunity
- 30 minutes from Belleville / Highway 401
- Many new residential developments including a proposed 400 unit subdivision next to site



Zoned Highway Commercial

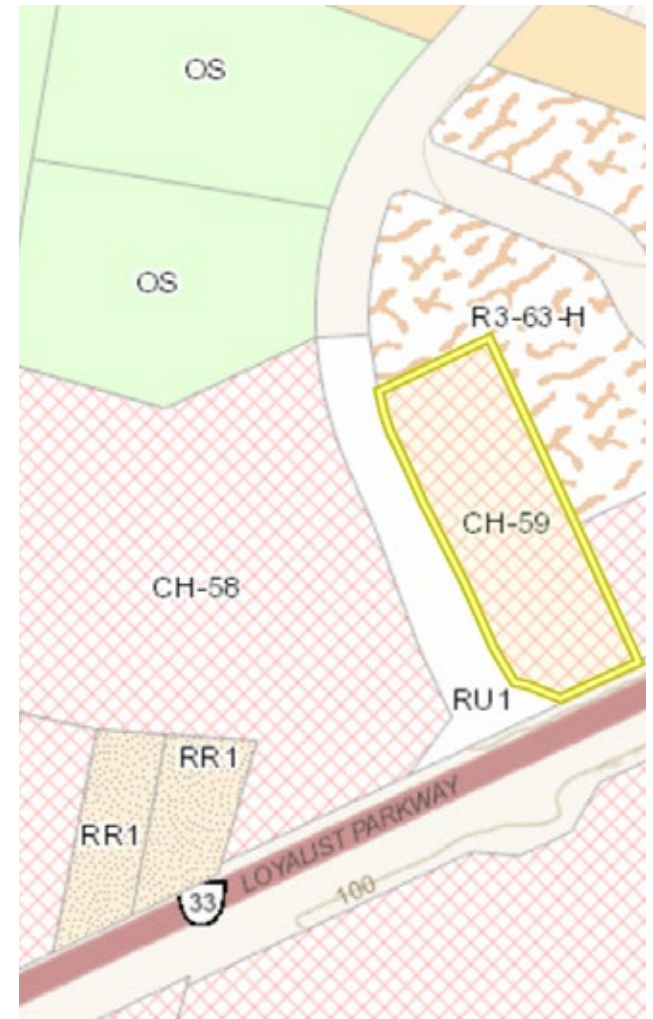
[illegible]

Permitted Uses

Zoned Highway Commercial

PERMITTED USES

Personal service
Business or professional office
Financial institution or bank
Medical or dental clinic
Antique shop
Motor vehicle fuel bar
Motor vehicle service station
Farm and garden machinery sales and service establishment
Swimming pool sales and display
Fruit and vegetable market
Garden and nursery sales and supply establishment
Restaurant, including take out, drive thru and mobile restaurant
Food store
Light equipment sales and service establishment
Brew-your-own beer and wine establishment
Veterinary clinic
Building supply outlet



DEERFIELD
BROKERAGE

Contact

For development
opportunities

Alex Shafran

Broker of Record

905-667-4892

ashafran@deerfielddevelopments.com



www.deerfieldbrokerage.com



DEERFIELD
BROKERAGE